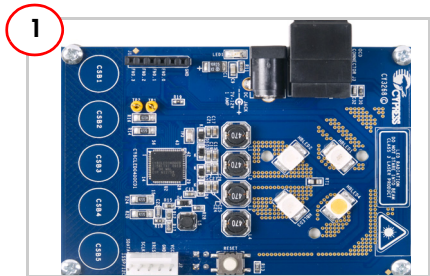
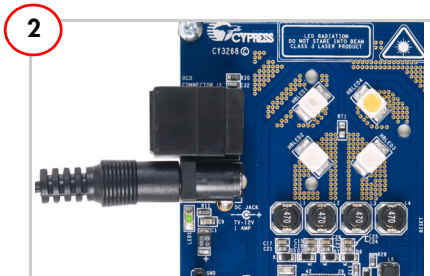


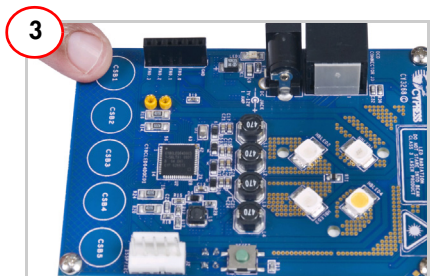
CY3268 POWERPSOC® LIGHTING STARTER KIT QUICK START GUIDE



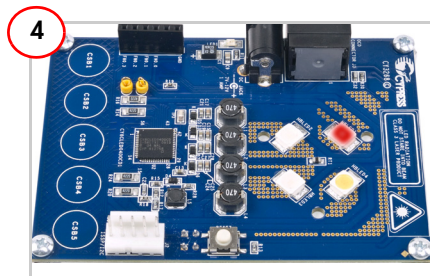
Remove the CY3268 PowerPSOC board from the package.



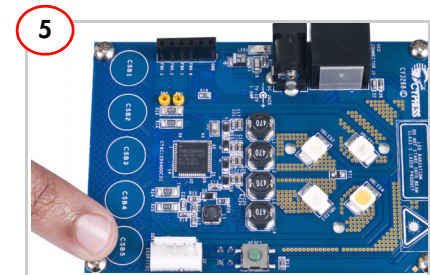
Plug in the power supply. LED1 (green) turns ON.



Touch the CapSense buttons CSB1 to CSB4 to turn on the HBLEDs. Touch them again to select corresponding HBLED.



The respective high brightness LED turns ON.

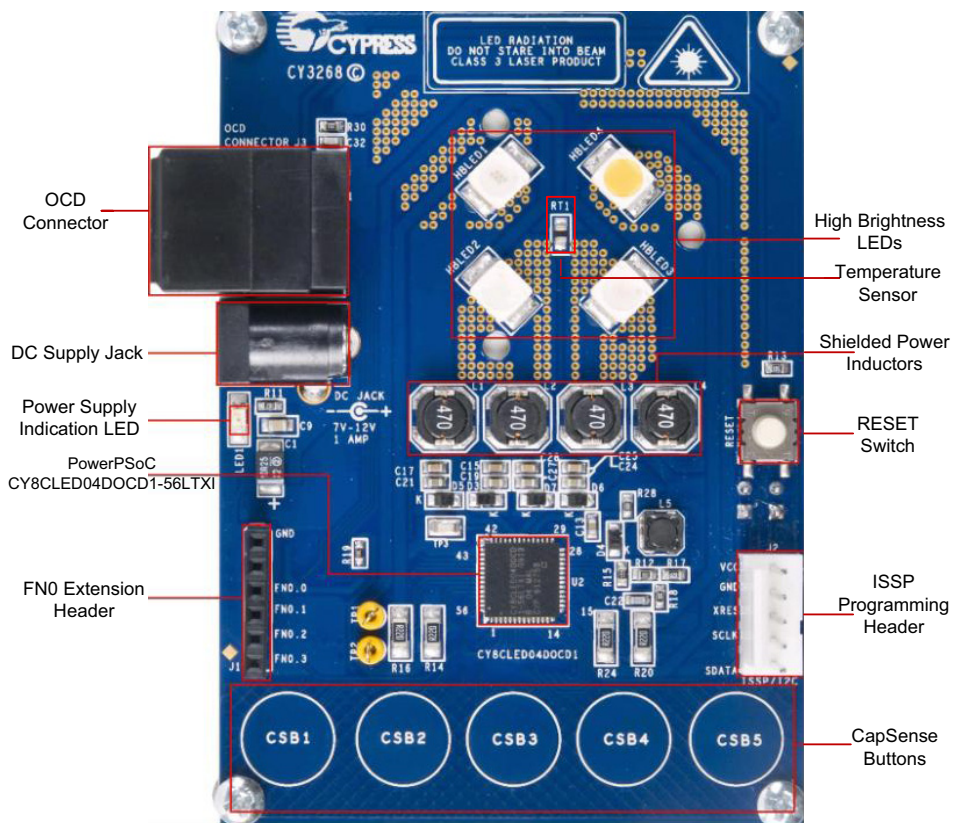


Touch the CapSense button CSB5 to change the HBLED brightness. There are 10 brightness levels for each HBLED.



1. Insert the kit CD in your PC's CD drive.
2. View the user's guide.
3. Install the kit contents, PSOC Designer, and PSOC Programmer.

CY3268 PowerPSoC Board Details



WARNING: HIGH BRIGHTNESS LEDs CAN CAUSE PERMANENT DAMAGE!

Do not look at the HBLEDs directly. The HBLEDs illuminate at a very high intensity and can cause permanent eye damage. Use a thick white sheet of paper as diffuser if there is no optical diffuser available.

WARNING: Generally all lab work in power electronics must be done with extreme care. Caution must be exercised when using power supplies and/or power related equipment.

For the latest information about this kit visit
www.cypress.com/go/CY3268



Mouser Electronics

Authorized Distributor

Click to View Pricing, Inventory, Delivery & Lifecycle Information:

[Cypress Semiconductor:](#)

[CY3268](#)